



# REBEL SERIES

DYNABRADE GRINDERS, SANDERS & CUT-OFF TOOLS

INDUSTRY LEADER - EXTENDED GEAR LIFE!

**THE LEADER IN INNOVATIVE  
SURFACE FINISHING SOLUTIONS**



- + 1.3 HP REBEL SERIES
- + COMPACT REBEL SERIES
- + 2.8 HP REBEL SERIES
- + ACCESSORIES & ABRASIVES

WE LISTEN. WE OBSERVE. **WE INSPIRE.**

# REBEL SERIES

## GRINDERS, SANDERS & CUT-OFF TOOLS

Rebel series grinders and sanders are powerful tools designed to overcome the challenges of heavy-duty industrial applications. Grind through heavy welds, rapidly remove parting lines or cut & grind through large gates with the most powerful right-angle grinders and sanders from Dynabrade.

Engineered for long-lasting reliability, Rebel Series tools feature super-finished gears and a wick-lube system that continuously protects internal components, extends gear life, and reduces maintenance intervals.

All Rebels are compatible with coated, bonded, and specialty abrasives for a wide range of industrial applications.

### 1.3 HP REBEL SERIES

Lightweight power built for industrial grinding and sanding applications. The 1.3 HP Rebel Series delivers the ideal balance of performance, durability, and operator comfort for weld removal, blending, surface preparation, and general fabrication work.

### COMPACT REBEL SERIES

Compact size with heavy-duty performance. The Compact Rebel Series combines powerful material removal with a shorter housing design for improved access, maneuverability, and control in tight workspaces. Designed for aggressive grinding, cutting, and weld removal applications, these tools deliver durability and productivity in demanding industrial environments.

### 2.8 HP REBEL SERIES

Maximum power for the toughest industrial applications. The 2.8 HP Rebel Series is engineered for aggressive grinding, heavy weld removal, large gate removal, and demanding cutting applications.

## FEATURES

#### POWER

- + Tackle heavy-duty applications with ease.
- + Governor-controlled motor ensures consistent performance.

#### DURABILITY

- + Rugged, cast aluminum motor housing.
- + "Wick Lube" system extends gear life with simple lubrication.

#### COMPATIBILITY

- + Work with fiber discs, layered flap discs, type 27, 29, 41 or 42 abrasive wheels using guard and flange configurations.
- + Adjustable guards & vibration dampening handles allow for left or right-handed use.



*American-made from the highest grade materials for long-life and high durability.*

# REBEL 1.3 HP SERIES

## GRINDERS AND SANDERS



(MODEL 52632 SHOWN)

FEATURE	BENEFIT
1 SPINDLE LOCK	Quick and easy abrasive changeout
2 ROTATIONAL EXHAUST	360° rotation, directs exhaust away from operator
3 VIBRATION DAMPENING HANDLE	Reduces vibration transfer to operator
4 "WICK LUBE" SYSTEM	Extends gear life
5 INSULATED THROTTLE HANDLE	Insulates operator's hand from cold air transfer

The Rebel 1.3 hp series is a family of sanders and grinders that deliver huge power in a compact, ergonomic design. The complete range of tools can mount and effectively utilized similar abrasives for cutting, grinding and sanding applications. Operator safety and comfort are at the core of the Rebel series design, with integrated features that shield against debris while supporting a natural working position that helps reduce fatigue.

### SPIRAL BEVELED GEARS

- + Low vibration and even wear



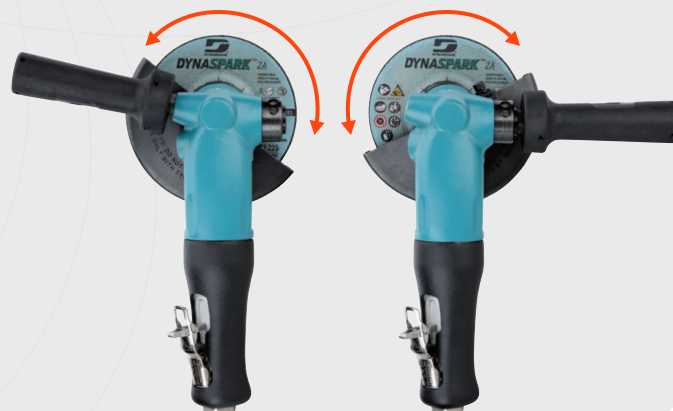
### ROTATABLE MUFFLER

- + Directs exhaust away from operator



### MULTI-POSITION GUARD

- + Rotates for operator protection and improved sightlines



# 1.3 HP DISC SANDERS

## PREPARATION & BLENDING

Rebel 1.3 hp disc sanders are the perfect combination of speed and power for use with Dynafire™ premium ceramic coated abrasive fiber discs. The productivity enhancing combination makes short work of medium to heavy-duty blending and preparation applications.



5" (125 MM)  
52596



5" (125 MM)  
52635

**TECH TIP** Always present the tool and abrasive to the work piece at a 10° – 15° angle for efficient abrasive use and to prevent gouging.

### THERMOPLASTIC BACK-UP PADS

- + Fins help expel heat from disc pad extending disc life.



Dia.	Part No.	Pad MOS RPM	Female Thread	Density
4-1/2" (115 mm)	50150	13,000	M14 x 2	Medium
	50288		5/8" - 11	Hard
	50289		3/8" - 24	Hard
	51148		5/8" - 11	Medium
	51149		5/8" - 11	Medium
5" (125 mm)	50151	12,000	M14 x 2	Medium
	50296		5/8" - 11	Hard
	51150		5/8" - 11	Medium
7" (180 mm)	50152	8,500	M14 x 2	Hard
	50297		5/8" - 11	Medium
	51151		5/8" - 11	Hard

### RUBBER MOLDED BACK-UP PADS

- + Spiral ribs provide contact points and form air-flow channels, extending disc life.



Dia.	Part No.	Pad MOS RPM	Female Thread	Density
4-1/2" (115 mm)	50157	13,500	M14 x 2	Medium
	50281		5/8" - 11	
5" (125 mm)	50282	13,000	5/8" - 11	Medium
7" (180 mm)	50283	8,600	5/8" - 11	

### FIBER DISC PHENOLIC BACK-UP PAD

- + 5/8"-11 female thread
- + Includes 50267 pad assembly with 50268 locking nut



Dia.	Part No.	Pad MOS RPM	Female Thread	Density
4-1/4" (110 mm)	50261	13,000	5/8" - 11	Hard

Model No.	Diameter	Speed	Power	Vacuum Style	Sound Level	Max. Air Flow	Tool Thread	Weight	Height	Length
52631	4" (100 mm)	12,000RPM	1.3 hp (970 W)	Non-Vacuum	82 dB(A)	43 SCFM (1,218 LPM)	3/8"-24 Male	4.3 lb (1.9 kg)	3.3" (83 mm)	10" (255 mm)
52634	4.5" (115 mm)						5/8"-11 Male	4.4 lb (2 kg)	3.6" (90 mm)	
52635	5" (125 mm)							4.5 lb (2 kg)		
52657	7" (180 mm)	6,000 RPM			76 dB(A)		M14x2 Male			
52802		7,200 RPM			78 dB(A)					
53868		8,500 RPM			76 dB(A)					
52656	5" (125 mm)	6,000 RPM			76 dB(A)		5/8"-11 Male	5.5 lb (2.5 kg)	4" (100 mm)	
53869		8,500 RPM		76 dB(A)						
52596	5" (125 mm)	12,000 RPM		Vacuum	80 dB(A)		5.8 lb (2.6 kg)	16" (410 mm)		
52597	7" (180 mm)	6,000 RPM			76 dB(A)					

Additional Specifications Air Inlet 3/8" NPT | Air Hose I.D. 3/8" (10 mm) | Air Pressure 90 PSIG (6.2 Bar)  
Each model includes thermoplastic back-up pad. Abrasives shown are sold separately.

For the most current tool specifications, visit [dynabrade.com](http://dynabrade.com)

# 1.3 HP DEPRESSED CENTER WHEEL GRINDERS

## HEAVY MATERIAL REMOVAL

Rebel 1.3 hp depressed center wheel grinders are a staple tool for metalworkers, fabricators and welders. Used to complete aggressive material removal applications with type 27 style bonded abrasives or blending and finishing applications with layered flap discs.



**4.5" (115 MM)**  
52632 | 52638



**5" (125 MM)**  
52633 | 52639



### DEPRESSED CENTER WHEEL GRINDER GUARDS

+ Always use appropriate size guard for tool and follow abrasive speed recommendations.

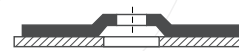
Dia.	Part No.
4" (100 mm)	25214
4.5" (115 mm)	25212
5" (125 mm)	25215

### DEPRESSED CENTER FLAP WHEELS

TYPE 29 CURVED



TYPE 27 FLAT



### TYPE 27-42 WHEEL



## TECH TIP

Use optional backup flange for mounting high-profile abrasive flap discs with a 7/8" center hole.

53697 for 5/8"-11 models • 53630 for M14 x 2 models

Model No.	Diameter	Speed	Power	Vacuum Style	Sound Level	Max. Air Flow	Tool Thread	Weight	Height	Length
52630	4" (100 mm)	13,500 RPM	1.3 hp (970 W)	Non-Vacuum	83 dB(A)	43 SCFM (1,218 LPM)	3/8"-24 Male	4.8 lb (2.2 kg)	3.4" (85 mm)	10" (255 mm)
52632	4.5" (115 mm)	12,000 RPM			78 dB(A)		5/8"-11 Male	5.1 lb (2.3 kg)	3.8" (95 mm)	
52638					M14x2 Male					
52633	5" (125 mm)	12,000 RPM			79 dB(A)		5/8"-11 Male	5.4 lb (2.5 kg)		
52639					78 dB(A)		M14x2 Male			

Additional Specifications Air Inlet 3/8" NPT | Air Hose I.D. 3/8" (10 mm) | Air Pressure 90 PSIG (6.2 Bar)  
Each model includes safety guard and spanner wrench. Abrasives shown are sold separately.

For the most current tool specifications, visit [dynamabrade.com](http://dynamabrade.com)

# 1.3 HP CUT-OFF WHEEL TOOLS

## DIAMOND & TYPE 41

The Rebel 1.3 hp vacuum diamond cutoff wheel tool utilizes 5" diameter wheels with 3/4" center hole for cutting, trimming and scoring in metalworking and composite fabrication applications.

**5" (125 MM)**  
52615



### 5" DIAMETER DIAMOND CUT-OFF WHEELS

Utilized for fiberglass mold and flash trimming, plus trimming of composite components.

- + Continuous Rim: Used most commonly for fiberglass cutting.
- + Continuous Rim with Side Spoke: Used for sawing thicker material and curved surfaces, without jamming the wheel and stalling the tool.
- + Gulletted/Slotted: Used for cutting fiberglass 3/4" thick or more.



Part No.	Center Hole	Thickness	Grit Wrap	Max RPM	Wheel Type	Grit
93921	3/4"	3/32"	1/8"	15,000	Continuous Rim	40/50
93650					Side Spoked	
93662					Gulletted / Slotted	

Rebel Type 41, 1.3 hp cutoff grinders efficiently power reinforced cut-off wheels for cutting of fiberglass, composites, and metal in a wide variety of fabrication applications.

**4.5" (115 MM)**  
52584

**5" (125 MM)**  
52585



### CUT-OFF GRINDER GUARDS

- + Cut-off Tools are intended to be used with 4-1/2" and 5" Type 41 reinforced straight cut-off wheels with a 7/8" center hole.
- + Cut-off Tools are equipped with specific designed guards and flanges for use with Type 41 wheels to provide maximum operator protection.
- + 360° Rotational exhaust directs exhaust away from operator.
- + Two-Position Side Handle for left or right hand use.

### TYPE 41 WHEEL



## TECH TIP

Always orient your work so that grinding wheels rotate away from sharp edges; grinding wheels can catch an edge and cause the grinder to kick back.

Model No.	Diameter	Speed	Power	Sound Level	Vacuum Style	Max. Air Flow	Tool Thread	Weight	Height	Length
52615	5" (125 mm)	12,000 RPM	1.3 hp (969 W)	85 dB(A)	Vacuum	43 SCFM (1,218 LPM)	3/8"-24 Male	7.3 lb (3.3 kg)	8.4" (215 mm)	15.2" (385 mm)
52584	4.5" (115 mm)	13,000 RPM		84 dB(A)	Non-Vacuum		5/8"-11 Male	5.4 lb (2.4 kg)	4" (100 mm)	10" (255 mm)
52585	5" (125 mm)	12,000 RPM		78 dB(A)				5.7 lb (2.6 kg)		

Additional Specifications Air Inlet 3/8" NPT | Air Hose I.D. 3/8" (10 mm) | Air Pressure 90 PSIG (6.2 Bar)  
Abrasives shown are sold separately.

For the most current tool specifications, visit [dynabrade.com](http://dynabrade.com)

# 1.3 HP SERIES RIGHT ANGLE GRINDER/SANDER

## ACCESSORY SELECTION FOR 1.3 HP SERIES ONLY

### IMPORTANT:

Never mount bonded non-reinforced grinding wheels. Tool speed must never exceed accessory speed rating. Check accessory manufacturer for details on maximum operating speed or special mounting instructions.

+ Always wear eye, face, respiratory and body protection.



Air Motor, 12,000 RPM, 5/8"-11 Spindle

### 4-1/2" Depressed Center Wheel



25212

+ Guard (4-1/2")

### 4-1/2" Layered Flap Discs



25215

+ Guard (5")

### 5" Depressed Center Wheel



25262

+ Back-Up Flange



53696

+ Locking Flange



### 4-1/2" Fibre Disc

50281

+ Spiral Back-Up Pad



50288

+ Ribbed Back-Up Pad



+ Spiral Backing Pad Lock Nut



+ Ribbed Backing Pad Lock Nut

### Optional Back-Up Flange

+ For use with high-profile layered flap disc products with a 7/8" thru hole.



53697

### Wrenches

94925 Spanner Wrench



95281 Open-End Wrench (19 mm)



96453 Open-End Wrench (16 mm)



95049 Hex Key Wrench (3/16")



# COMPACT REBEL SERIES

## 4-1/2" & 5" TYPE 27 DEPRESSED CENTER WHEEL GRINDERS

The Compact Rebel Series are powerful air tools in a compact housing design. Ideal for use in heavy-duty Industrial Applications.

**NEW**

**4.5" (115 MM)**  
58900 | 58901

**5" (125 MM)**  
58902 | 58903



### COMPACT REBEL DEPRESSED CENTER WHEEL GRINDERS

- + Features an adjustable Multi-Position Guard for optimum safety. No tools required.
- + For fast weld and stock removal, scale removal and heavy deburring.
- + For use with Type 27 grinding wheels.
- + Spindle Lock
- + Internal magnet for extended gear life.

**TECH TIP** Lubricate wick system through angle gear oil fitting with 4-5 plunges every 8 hours of use to achieve maximum gear life.

Model No.	Diameter	Autobalancer	Speed	Power	Sound Level	Maximum Air Flow	Air Pressure	Spindle	Weight	Height	Length
58900	4.5" (115 mm)	-	13,000 RPM	2.3 hp (1.7 kw)	104 dB(A)	107 SCFM (3,030 SLPM)	90 PSIG (6.2 Bars)	5/8"-11	4.6 lbs. (2.1 kg)	4" (100 mm)	9.5" (242 mm)
58901		Yes							4.7 lbs. (2.1 kg)		
58902	-	12,000 RPM	2.2 hp (1.6 kw)	4.7 lbs. (2.1 kg)							
58903	Yes			4.8 lbs. (2.2 kg)							

Additional Specifications Air Inlet 3/8" NPT | Air Hose I.D. 1/2" (13 mm) | Air Pressure 90 PSIG (6.2 Bar)

For the most current tool specifications, visit [dynabrade.com](http://dynabrade.com)

# COMPACT REBEL SERIES

## 4-1/2", 5" & 7" DISC SANDERS

The Compact Rebel Series are powerful air tools in a compact housing design. Ideal for use in heavy-duty Industrial Applications.

**NEW**

**4.5" (115 MM)**

58910 | 58911 | 58911M

**5" (125 MM)**

58912 | 58913 | 58913M

**7" (180 MM)**

58914 | 58915 | 58915M



### COMPACT REBEL DISC SANDERS

- + For use in heavy-duty metal fabrication, industrial grinding, and surface preparation.
- + Includes backing pad and locking nut for a variety of abrasives.
- + Spindle Lock
- + Internal magnet for extended gear life.

### DYNABRADE BACK-UP PADS

- + Spiral Face Thermoplastic back-up pad included with tool



Part No.	Dia.	Material	Type	Thread Size	Density
51148	4-1/2"	Thermoplastic	Spiral Face	5/8"-11 Female	Medium
51150	5"				
51151	7"				

Model No.	Diameter	Autobalancer	Speed	Power	Sound Level	Maximum Air Flow	Air Pressure	Spindle	Weight	Height	Length		
58910	4.5" (115 mm)	-	13,000 RPM	2.3 hp (1.7 kw)	102 dB(A)	107 SCFM (3,030 SLPM)	90 PSIG (6.2 Bars)	5/8"-11	4 lbs. (1.8 kg)	3.7" (93 mm)	10.2" (260 mm)		
58911		Yes							4.3 lbs. (2 kg)	3.9" (99 mm)			
58911M		Yes							M14	3.9" (99 mm)			
58912	5" (125 mm)	-	12,000 RPM	2.2 hp (1.6 kw)	109 dB(A)			107 SCFM (3,030 SLPM)	90 PSIG (6.2 Bars)	5/8"-11	4 lbs. (1.8 kg)	3.7" (93 mm)	10.5" (266 mm)
58913		Yes									4.2 lbs. (2 kg)	3.9" (99 mm)	
58913M		Yes									M14	3.9" (99 mm)	
58914	7" (180 mm)	-	8,500 RPM	2.0 hp (1.5 kw)	114 dB(A)	107 SCFM (3,030 SLPM)	90 PSIG (6.2 Bars)			5/8"-11	4.5 lbs. (2 kg)	3.7" (93 mm)	11.5" (291 mm)
58915		Yes									4.1" (103 mm)		
58915M		Yes									M14	4.1" (103 mm)	

Additional Specifications Air Inlet 3/8" NPT | Air Hose I.D. 1/2" (13 mm) | Air Pressure 90 PSIG (6.2 Bar)

For the most current tool specifications, visit [dynabrade.com](http://dynabrade.com)

# COMPACT REBEL SERIES

## 5" & 7" VACUUM DISC SANDERS

The Compact Rebel Series sets the industry standard for powerful air tools in a compact, ergonomic design engineered for extended gear life and long-term durability. Built to perform in demanding industrial environments, it's the ideal solution for heavy-duty applications.

### VACUUM DISC SANDERS

Rotatable Vacuum Sanding Shroud allows for more accurate views of workpieces. For non-ferrous surfaces only such as Carbon Fiber, Composites, Fiberglass, Turbine Blades and more.

- + Features rotatable vacuum sanding shroud.
- + Shroud allows for more accurate debris collection.
- + For non-ferrous surfaces only such as carbon fiber, composites, and fiberglass.
- + Internal magnet for extended gear life.



**5" (125 MM)**  
58912V

**7" (180 MM)**  
58914V

Model No.	Diameter	Autobalancer	Speed	Power	Sound Level	Maximum Air Flow	Air Pressure	Spindle	Weight	Height	Length
58912V	5" (125 mm)	-	12,000 RPM	2.9 hp (2.2 kw)	103 dB(A)	107 SCFM (3,030 SLPM)	90 PSIG (6.2 Bars)	5/8"-11 Male	4.5 lbs. (2 kg)	4.1" (104 mm)	10.5" (104 mm)
58914V	7" (180 mm)	-	8,500 RPM	2.0 hp (1.5 kw)	107 dB(A)				5.2 lbs. (2.4 kg)	4.2" (106 mm)	11.5" (291 mm)

Additional Specifications Air Inlet 3/8" NPT | Air Hose I.D. 3/8" (10 mm) | Air Pressure 90 PSIG (6.2 Bar)

For the most current tool specifications, visit [dynabrade.com](http://dynabrade.com)

# COMPACT REBEL SERIES

## TYPE 41 CUT-OFF TOOLS

### TYPE 41 CUT-OFF TOOLS

For efficient cutting of metal, frames, stainless steel, fiberglass and much more. Ideal for use on a variety of materials.

- + Includes adjustable multi-position guard for optimum safety.
- + For use with Type 41 reinforced cut-off wheels.
- + Internal magnet for extended gear life.



**4.5" (115 MM)**  
58940

**5" (125 MM)**  
58941

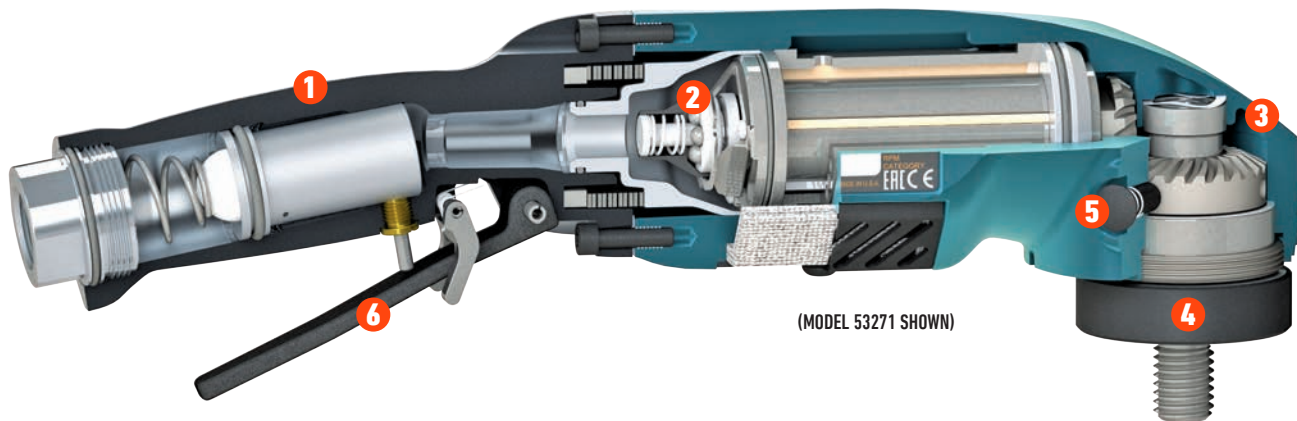
Model No.	Diameter	Autobalancer	Speed	Power	Sound Level	Maximum Air Flow	Air Pressure	Spindle	Weight	Height	Length
58940	4.5" (115 mm)	-	13,000 RPM	2.9 hp (2.2 kw)	104 dB(A)	107 SCFM (3,030 SLPM)	90 PSIG (6.2 Bars)	5/8"-11 Male	5 lbs. (2 kg)	3.9" (99 mm)	9.5" (242 mm)
58941	5" (125 mm)	-	12,000 RPM		109 dB(A)				5.1 lbs. (2.4 kg)		

Additional Specifications Air Inlet 3/8" NPT | Air Hose I.D. 1/2" (13 mm) | Air Pressure 90 PSIG (6.2 Bar)

For the most current tool specifications, visit [dynabrade.com](http://dynabrade.com)

# 2.8 HP REBEL SERIES

## 7" & 9" GRINDERS AND SANDERS



(MODEL 53271 SHOWN)

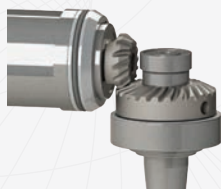
Rebel 2.8 hp series grinders and sanders are powerful tools designed to overcome the challenges of heavy-duty industrial applications. Grind through heavy welds, rapidly remove parting lines or cut & grind through large gates with the most powerful right angle grinder or sander from Dynabrade, the Rebel 2.8 hp series.

Durability has been elevated to a new level; the Rebel 2.8 hp is a tool to depend upon. Industrial applications can be optimized using a variety of abrasives with an assortment of attachment options. Dynabrade has engineered optional guards, flanges, and backing pad configurations that make abrasive compatibility with the Rebel 2.8 hp Series easy!

FEATURE	BENEFIT
1 10° OFFSET HANDLE	Promotes natural hand & wrist position
2 GOVERNOR-CONTROLLED MOTOR	Provides consistent power under load
3 "WICK LUBE" SYSTEM	Extends gear life
4 AUTOBALANCER (MODEL SPECIFIC)	For reduced vibration
5 SPINDLE LOCK	Fast, easy abrasive changes
6 SAFETY-LOCK THROTTLE LEVER	Prevents accidental startup

### SPIRAL BEVELED GEARS

- + Specifically matched to ensure even wear.
- + "Wick-Lube" system extends gear life. 1,000 hours of typical usage before recommended maintenance.



### ADJUSTABLE MUFFLER

- + Directs exhaust away from operator.
- + Muffler cover can be positioned for left or right-handed operators.



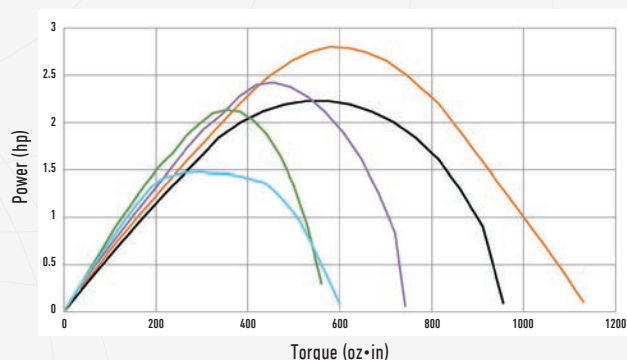
### MULTI-POSITION GUARD

- + Rotates 67° from center for operator protection and improved sightlines.
- + 5 screws safely secure guard.



### BEST-IN-CLASS TORQUE

Competitive Comparison - 6,500 RPM Grinders



### POWER & TORQUE

- + By delivering power under load, Rebel 2.8 hp grinders and sanders outperform competitors in heavy-duty applications.
- + Compared to its competitors, the Rebel 2.8 hp Series maintains greater power as torque demands increase.

— DYNABRADE  
 — Competitor 1  
 — Competitor 2  
 — Competitor 3  
 — Competitor 4

# 2.8 HP DISC SANDERS

## PREPARATION & BLENDING

Rebel 2.8 hp disc sanders are the most desirable tool choice in sizable preparation, blending and MRO applications. Having a lower profile and even weight distribution improves sightlines and increases maneuverability for operators. Updated with "wick lube" system for extended gear life.

7" (180 MM)  
53270 | 53271



7" (180 MM)  
53278 | 53279



### DYNABRADE BACK-UP PADS

- + Spiral Face Thermoplastic back-up pad included with tool
- + Spiral Face forms air-flow channels with spiral ribs to extend disc life
- + Radial Rib expel heat from pad with fins



Part No.	Dia.	Material	Type	Thread Size	Density
51151	7" (180 mm)	Thermoplastic	Spiral Face	5/8"-11 Female	Medium
50297			Radial Rib		Hard
50283	Rubber Molded	Spiral Face	Medium		
50914	9" (230 mm)	Thermoplastic	Spiral Face		Medium

### TECH TIP

Always present the tool and abrasive to the work piece at a 10° - 15° angle for efficient abrasive use and to prevent gouging.

Model No.	Diameter	Speed	Power	Vacuum Style	Autobalancer	Max. Air Flow	Tool Thread	Weight	Height	Length
53270	7" (180 mm)	8,500 RPM	2.8 hp (2,100 W)	Non-Vacuum	—	115 SCFM (3,256 LPM)	5/8"-11 Male	6.2 lb (2.8 kg)	4.1" (104 mm)	13.4" (340 mm)
53271					Yes				6.5 lb (2.9 kg)	
53272	9" (230 mm)	6,500 RPM	2.5 hp (1,860 W)	Non-Vacuum	—			6.8 lb (3.1 kg)	4.1" (104 mm)	
53273					Yes				4.6" (117 mm)	
53278	7" (180 mm)			Vacuum	—		4.5 lb (2 kg)	M14 x 2 Male	4.2" (107 mm)	18" (457 mm)
53279					Yes				7.5 lb (3.4 kg)	
53275	7" (180 mm)	8,500 RPM	2.8 hp (2,100 W)	Non-Vacuum	—		6.6 lb (3 kg)	4.3" (109 mm)	13.4" (340 mm)	
53277	9" (230 mm)	6,500 RPM	2.5 hp (1,860 W)	Yes	6.8 lb (3.1 kg)		4.4" (112 mm)			

Additional Specifications Air Inlet - 1/2" NPT | Air Hose I.D. - 1/2" (13 mm) | Air Pressure 90 PSIG (6.2 Bar)  
Each model includes spiral face thermoplastic back-up pad, spanner wrench 94949. Abrasives shown are sold separately.

For the most current tool specifications, visit [dynabrade.com](http://dynabrade.com)

# 2.8 HP DEPRESSED CENTER WHEEL GRINDERS

## HEAVY MATERIAL REMOVAL

Rebel 2.8 hp grinders are the most advantageous choice for demanding, high-torque grinding applications. Where some tools grind to a halt, the Rebel 2.8 hp grinder refuses to yield to the rigors of a fast-paced production environment. Updated with "wick lube" system for extended gear life.

**7" (180 MM)**  
53280 | 53281



**9" (230 MM)**  
53282 | 53283



**BACK-UP FLANGE**  
54980 5/8"-11 Thread

- + For use with type 27 & type 27/42 bonded abrasives
- + Standard on grinders 53280 & 53282

**LOW PROFILE BACK-UP FLANGE**  
54981 5/8"-11 Thread

- + For use with type 27 & 29 abrasive flap discs
- + Optional for grinders 53280 & 53282 only



### DEPRESSED CENTER WHEEL GRINDER GUARDS

- + Standard-height guard included with tool
- + High-profile guard allows for safe use of type 27 flap and stripping discs



Part No.	Dia.	Description	Abrasive Usage
54918	7" (180 mm)	Standard	Type 27 & 42 bonded wheels, Type 27 & 29 flap discs, Type 27 stripping discs
54920		High-Profile	Type 27 & 29 disposable hub flap discs
54919	9" (230 mm)	Standard	Type 27 & 42 bonded wheels
54921		High-Profile	Type 27 stripping wheels

**TECH TIP** Use low profile backup flange, 54981, to safely mount type 27 and 29 abrasive flap discs.

Model No.	Diameter	Autobalancer	Speed	Power	Max. Air Flow	Air Pressure	Spindle	Weight	Height	Length
53280	7" (180 mm)	—	8,500 RPM	2.8 hp (2,100 W)	115 SCFM (3,256 LPM)	90 PSIG (6.2 Bar)	5/8"-11 Male	7.3 lb (3.3 kg)	4.2" (107 mm)	13.4" (340 mm)
53281		Yes						7.5 lb (3.4 kg)		
53282	—	6,500 RPM	7.7 lb (3.5 kg)							
53283	Yes		7.9 lb (3.6 kg)							

Additional Specifications Air Inlet - 1/2" NPT | Air Hose I.D. - 1/2" (13 mm)

Each model includes safety guard, spanner wrench 94949 and open end wrench 96079 (for models 53280 & 53282). Abrasives shown are sold separately.

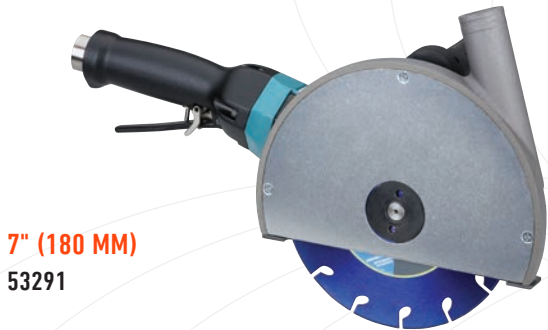
For the most current tool specifications, visit [dynabrade.com](http://dynabrade.com)

# 2.8 HP CUT-OFF GRINDERS

## DIAMOND & TYPE 41

Used for trimming and cutting of fiberglass and composites while maintaining depth of cut of nearly 2 inches. Diamond wheels are clean cutting and long-lasting alternative to traditional bonded abrasive types.

Type 41 cut-off grinders are staple tools in metal fabrication applications. Foundries, ship and rail yards with large scale, heavy-duty applications benefit from the consistent power and enhanced durability the Rebel 2.8 hp series delivers.



7" (180 MM)  
53291

### DIAMOND CUT-OFF GRINDER

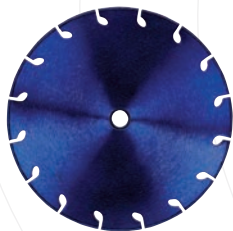
- + Removable, non-marring base
- + 7" (180 mm) wheel shroud has 1-1/4" (32 mm) outside diameter vacuum port that diverts airborne dust and debris to optional vacuum source
- + Adjustable Wheel Shroud has 2 positions, 22.5° interval



7" (180 MM)  
53290

### CUT-OFF GRINDER

- + Cut-off wheel guard covers 180° of grinding disc, providing front face protection for operators
- + Multi-position guard adjusts to 7 different cutting positions in 22.5° intervals



### DYNACUT™ DIAMOND SEGMENTED RIM CUT-OFF BLADE

94112

- + 7" Dia. x .060" Thick x 7/8" Hole
- + Ultra thin, "silent" metal core

	FEATURE	BENEFIT
1	ADVANCED BRAZED BONDING TECHNOLOGY	Extra-long life, greater diamond grain retention
2	ULTRA-THIN, "SILENT" METAL CORE	Reduces noise during cutting
3	ENVIRONMENTALLY FRIENDLY CUTTING	Fewer sparks and less grinding dust

Model No.	Diameter	Speed	Power	Vacuum Style	Max. Air Flow	Air Pressure	Tool Thread	Weight	Height	Length
53290	7"	8,500 RPM	2.8 hp (2,100 W)	Non-Vacuum	115 SCFM (3,256 LPM)	90 PSIG (6.2 Bar)	5/8"-11 Male	7.9 lb (3.6 kg)	4.3" (108 mm)	13.4" (340 mm)
53291	(180 mm)			Vacuum				8.4 lb (3.8 kg)	7.6" (193 mm)	16.2" (411 mm)

Additional Specifications Air Inlet 1/2" NPT | Air Hose I.D. 1/2" (13 mm)  
Abrasives shown are sold separately.

For the most current tool specifications, visit [dynabrade.com](http://dynabrade.com)

# DYNABRADE BONDED ABRASIVES

## DYNABOLT™ A/O ALUMINUM OXIDE

**Good choice for:** Carbon Steel,  
Stainless Steel, Cast Iron



## DYNASPARK™ ZA ZIRCONIA ALUMINA

**Better choice for:** Carbon Steel,  
Stainless Steel, Alloys, Gray Iron



## DYNAFIRE™ CA CERAMIC ALUMINA

**Best choice for:** Carbon Steel,  
Stainless Steel, Alloys, Gray Iron



## SMALL DIAMETER REINFORCED CUT-OFF WHEELS

### TYPE 1/41 CUTTING

Product Name	Model No.	Diameter	Thickness	Arbor	Type	Application	Usage Angle
Dynabrade DynaFire CA	79813	4" (100 mm)	3/16	3/8	Ceramic Alumina	Cutting	90°
Dynabrade DynaBolt AO	79808		0.035		Aluminum Oxide	RAG Cutting	
Dynabrade DynaBolt AO	79810		0.045	5/8			



### TYPE 27/42 CUTTING

Product Name	Model No.	Diameter	Thickness	Arbor	Type	Application	Usage Angle
Dynabrade DynaBolt SS AO	79826	4.5" (115 mm)	0.045	7/8	Aluminum Oxide	RAG Cutting Only	90°
Dynabrade DynaSpark ZA	79827	5" (130 mm)			Zirconia Alumina		
Dynabrade DynaSpark ZA	79828				Aluminum Oxide		
Dynabrade DynaBolt SS AO	79829	7" (180 mm)			Aluminum Oxide		



## DEPRESSED CENTER GRINDING AND COMBINATION GRINDING/CUT-OFF WHEELS

### T27/42 COMBO – CUTTING AND GRINDING

Product Name	Model No.	Diameter	Thickness	Arbor	Type	Application	Usage Angle
Dynabrade DynaSpark ZA	79832	4" (100 mm)	1/8	5/8	Aluminum Oxide	RAG Combo Cutting and Grinding	90° 30°



### T27 GRINDING

Product Name	Model No.	Diameter	Thickness	Arbor	Type	Application	Usage Angle
Dynabrade DynaSpark ZA	79839	4" (100 mm)	1/4	5/8	Zirconia Alumina	RAG Grinding Only	30°
Dynabrade DynaBolt AO	79840				Aluminum Oxide		
Dynabrade DynaSpark SS ZA	79842	4.5" (115 mm)		Zirconia Alumina			
Dynabrade DynaBolt SS AO	79843			Aluminum Oxide			
Dynabrade DynaSpark SS ZA	79844	5" (130 mm)		7/8	Zirconia Alumina		
Dynabrade DynaSpark ZA	79846	7" (180 mm)			5/8"-11		
Dynabrade DynaSpark ZA	79848	9" (230 mm)					

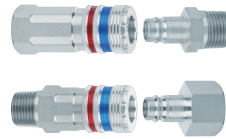




# REBEL SERIES

## REBEL SERIES ACCESSORIES

FOR AIRLINE CONNECTION, ERGONOMICS AND SAFETY



### AIR LINES

- 94820 5' (1.5 M) 3/8" dia.
- 94821 10' (3 M) 3/8" dia.
- 94822 25' (7.6 M) 3/8" dia.
- 94825 5' (1.5 M) 1/2" dia.
- 94826 10' (3 M) 1/2" dia.
- 94827 25' (7.6 M) 1/2" dia.

+ Threaded connection promotes operator safety

### DELTA WHIP HOSE

- 59702 1/2" X 5' Air Hose
- 3/8" MNPT x 1/2" FNPT

### SAFETY COUPLER & PLUG ASSEMBLY

- 98265 Female Coupler/Male Plug 3/8" dia.
- 98268 Male Coupler/Female Plug 3/8" dia.
- 98273 Female Coupler/Male Plug 1/2" dia.
- 98276 Male Coupler/Female Plug 1/2" dia.

+ Two-stage release prevents recoil  
*\*Do not use quick disconnect couplings on grinders.*

### SIDE HANDLE

- 53134
- + Ergonomic, anti-vibration handle

### DYNASWIVEL®

- 95461 3/8" dia.
- 95462 1/2" dia.
- + Swivels 360° at two pivot points allowing the air hose to drop directly to the floor while providing superb tool handling
- + For higher horsepower tools, attach at end of whip hose.
- \*Not suitable for compact rebel.*

## DYNABRADE MAINTENANCE PRODUCTS

FOR OPTIMAL REBEL 1.3, COMPACT REBEL & 2.8 HP SERIES PERFORMANCE



### DYNABRADE AIR LUBE

- 95842 1 Pint
- + 10W/NR, absorbs up to 10% of its weight in water
- + Specifically formulated for Dynabrade air tools



### GEAR OIL

- 95848 2.5 oz.
- + Formulated for Dynabrade geared tools utilizing a wick-type lubrication system



### LUBRICANT GUN

- 95541
- + Push-Type



### MOTOR TUNE-UP KIT

- 96644 2.8 HP
- 96100 1.3 HP
- + Maintain your motor at peak performance
- + Contains high and medium wearable parts

WE LISTEN. WE OBSERVE. WE INSPIRE.

HO  
 ©DYNABRADE, INC.  
 8989 Sheridan Drive  
 Clarence, New York 14031-1419

Tel: 716.631.0100  
 Fax: 716.631.2073  
 International Fax: 716.631.2524

PRINTED IN THE USA  
 REBEL SERIES D25-13  
 R1-0526  
 DYNABRADE.COM